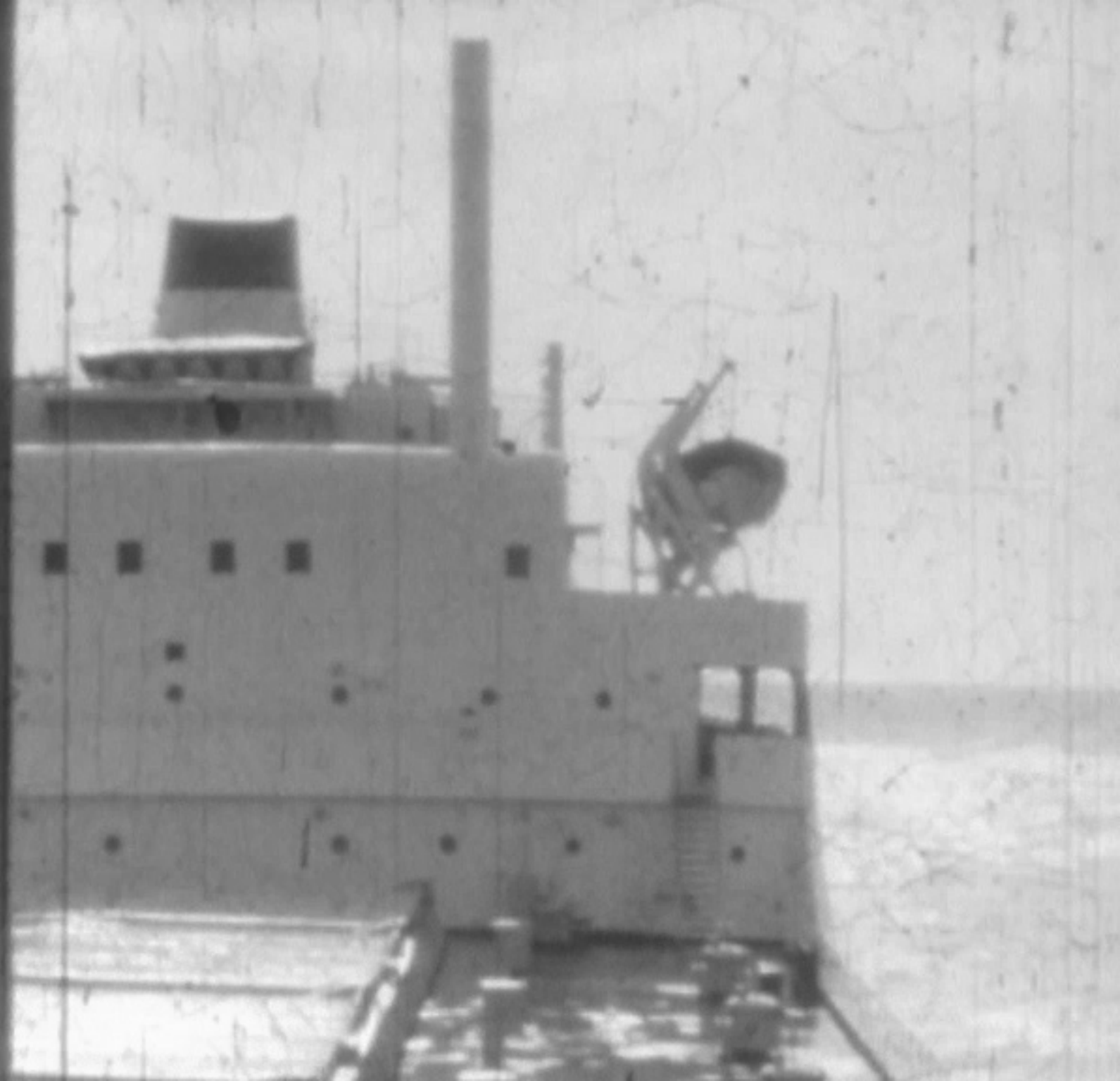
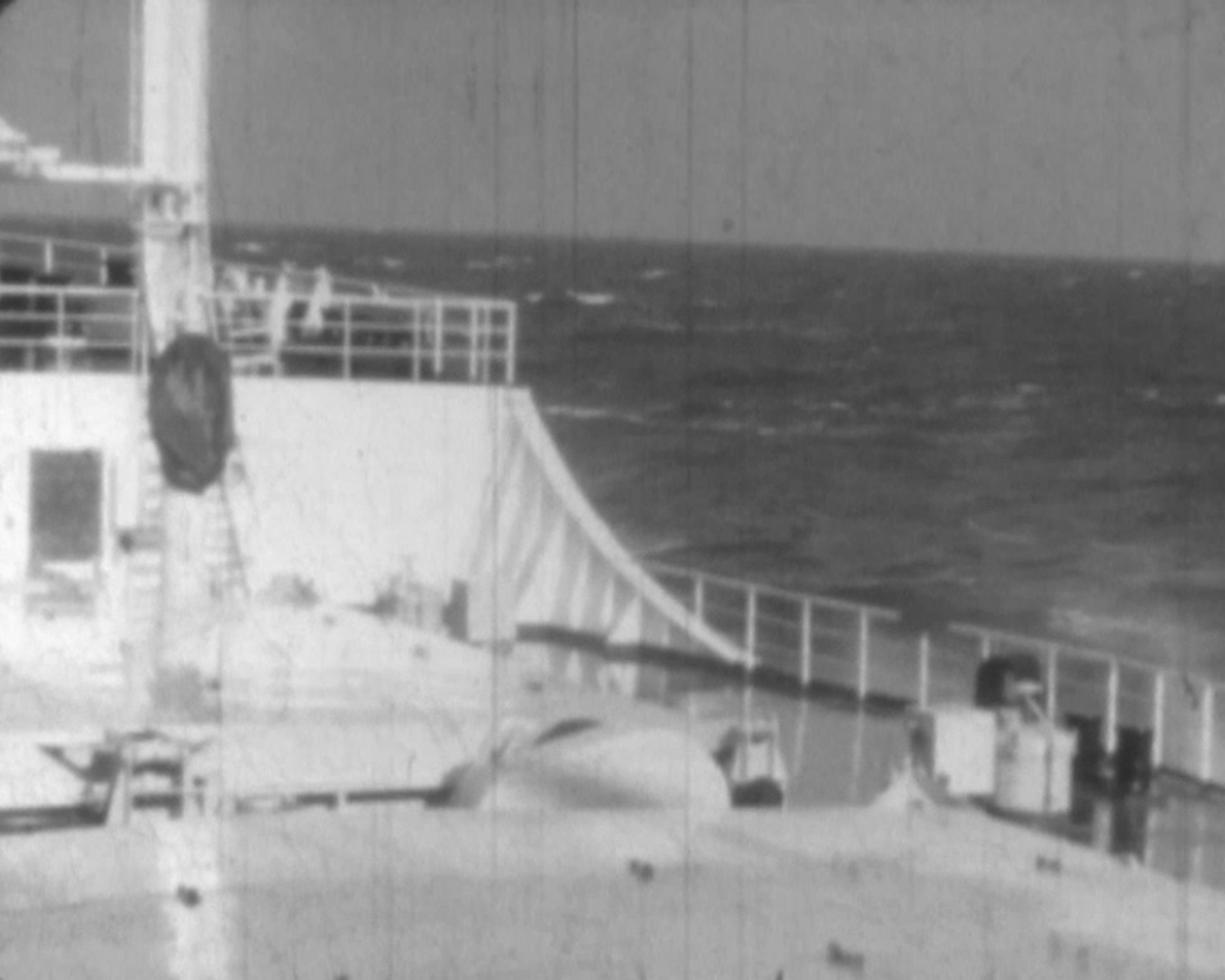


PIERRE L.D. DUNKERQUE 1963









מַלְאכָה
מַלְאכָה





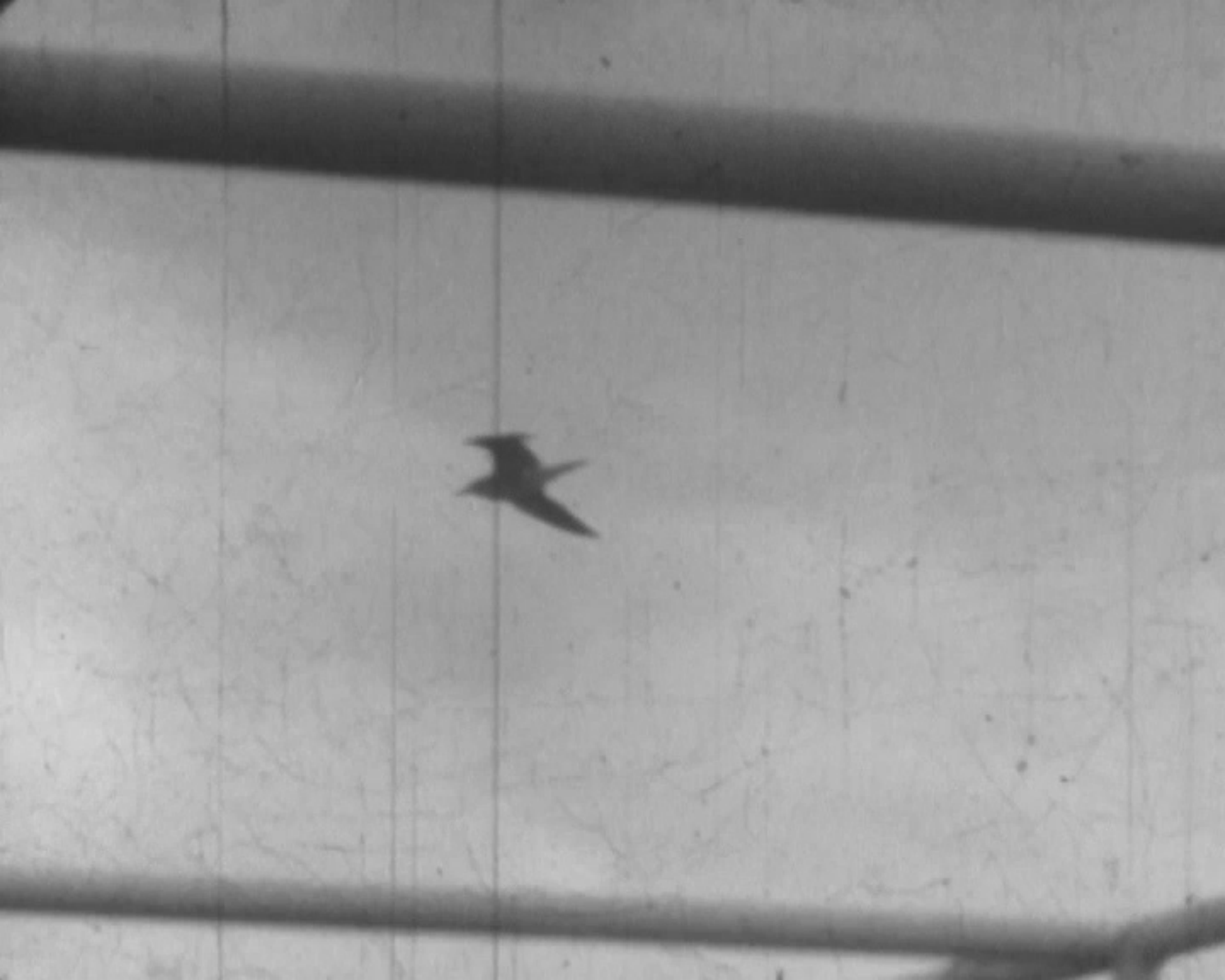












































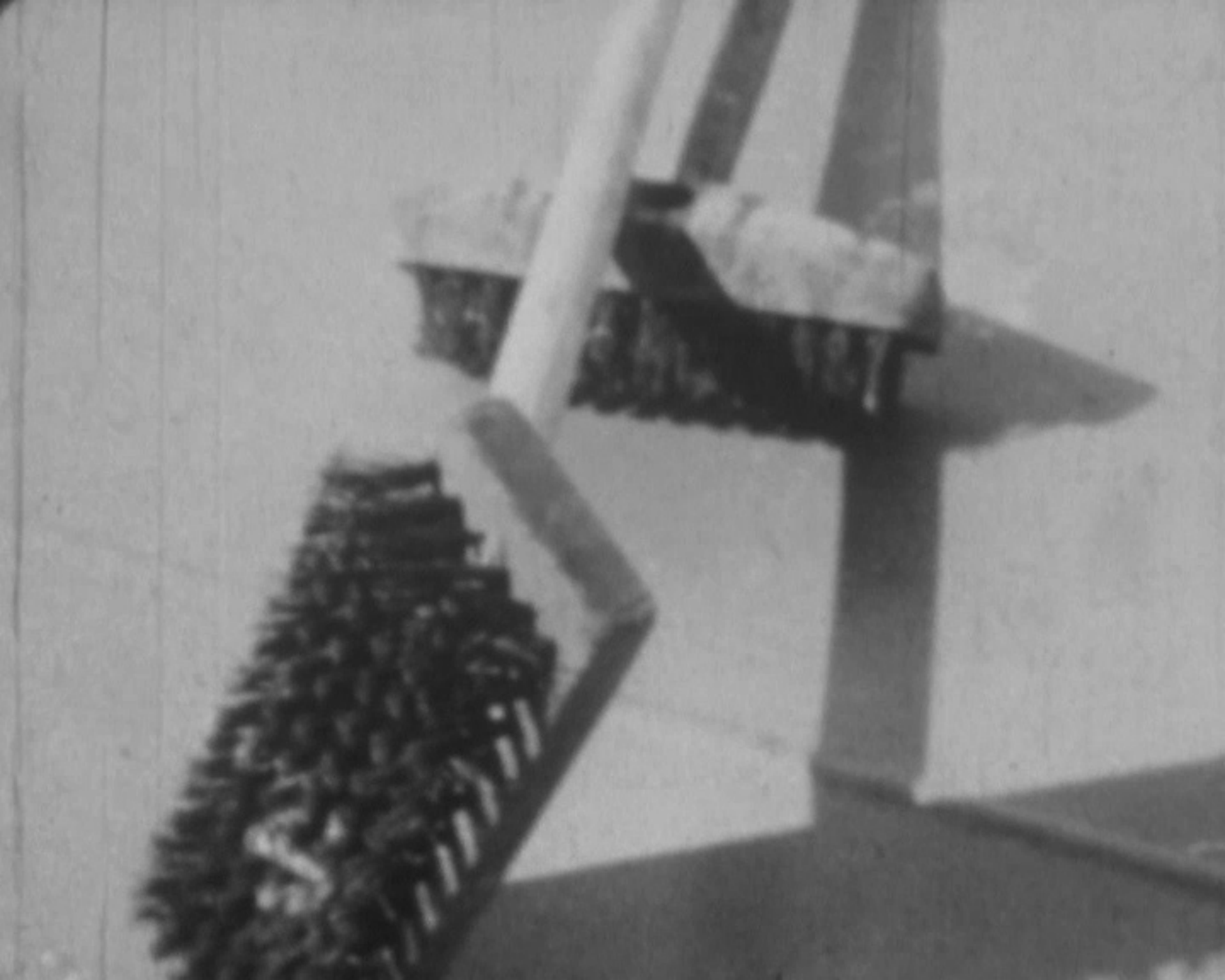






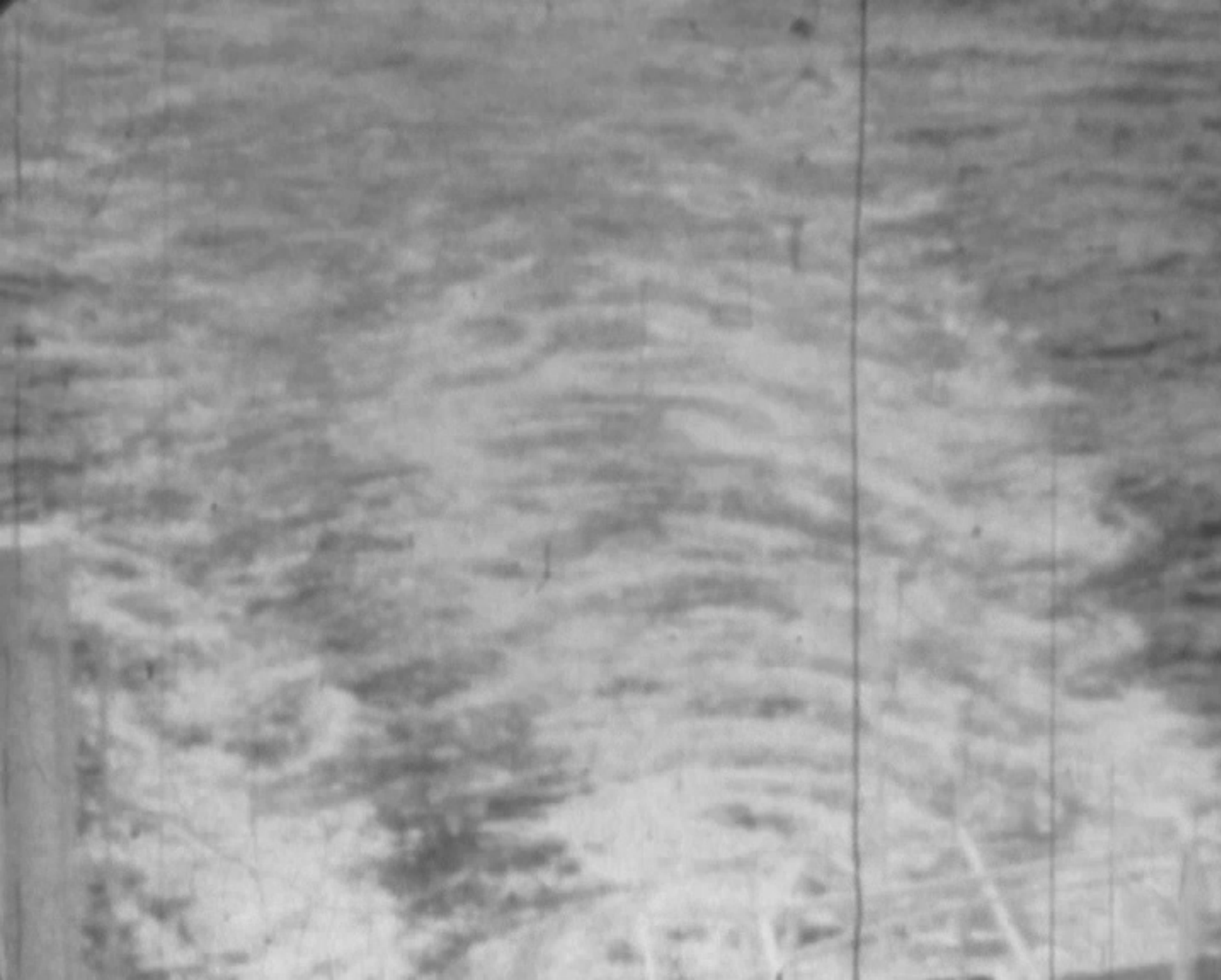


















































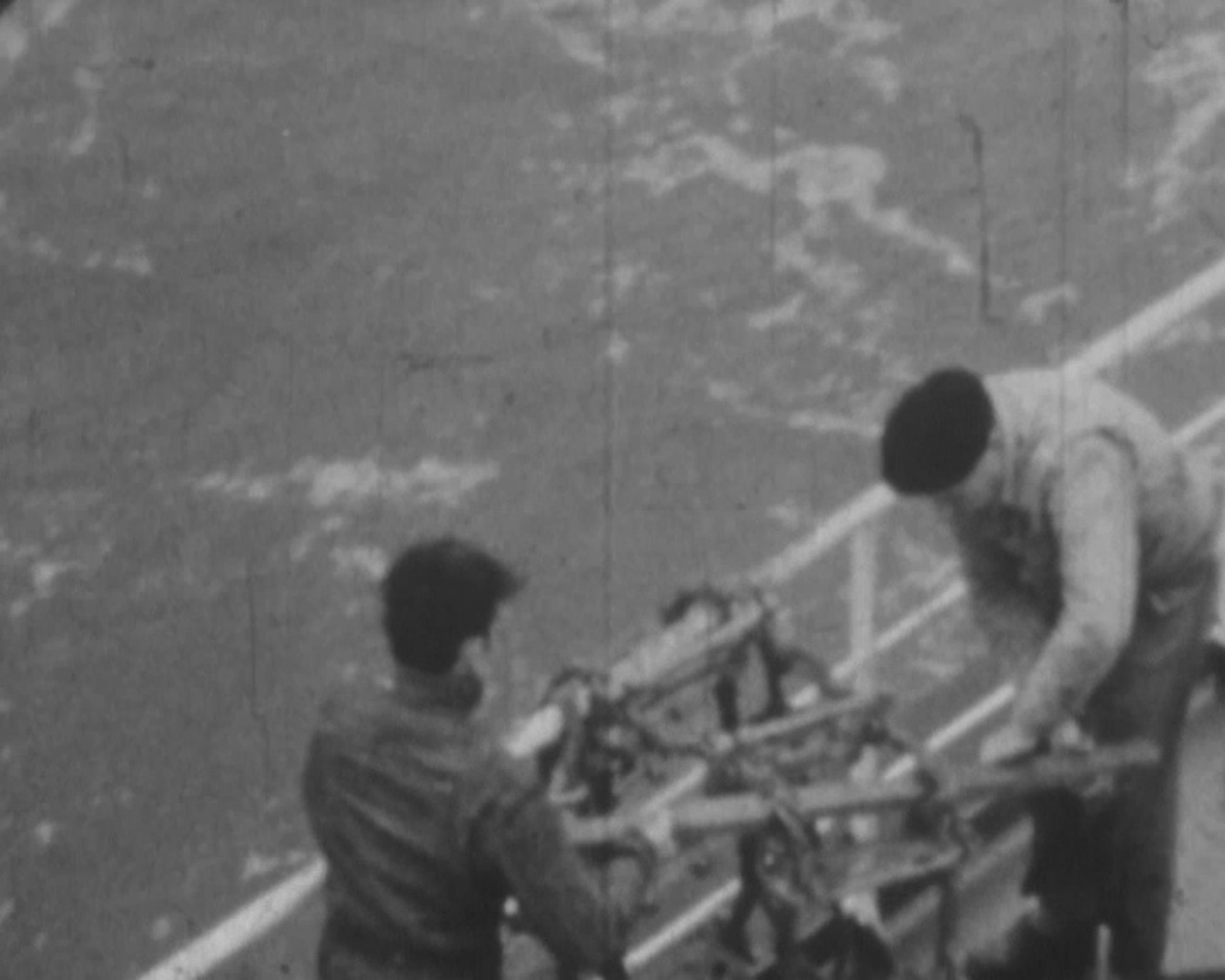




















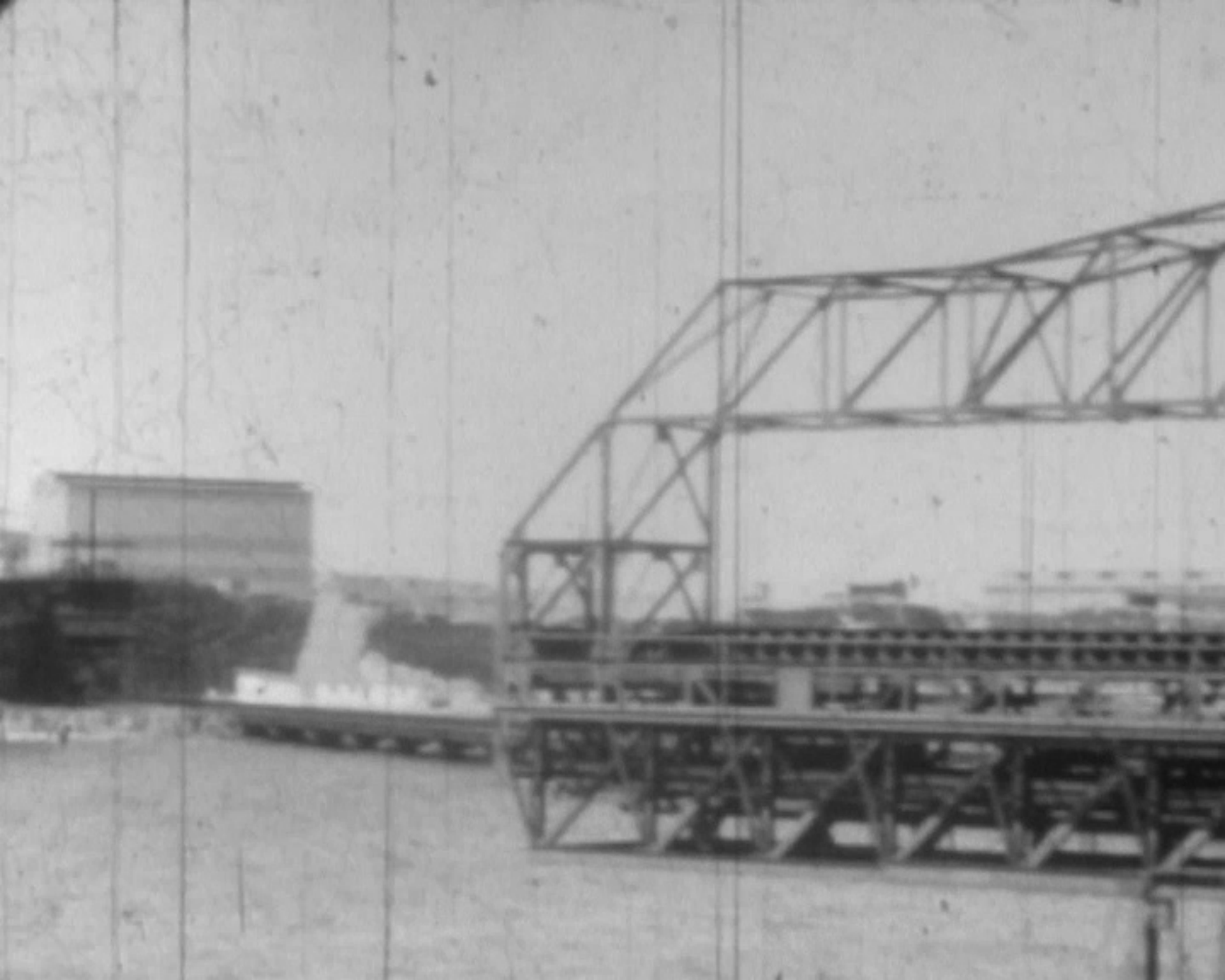












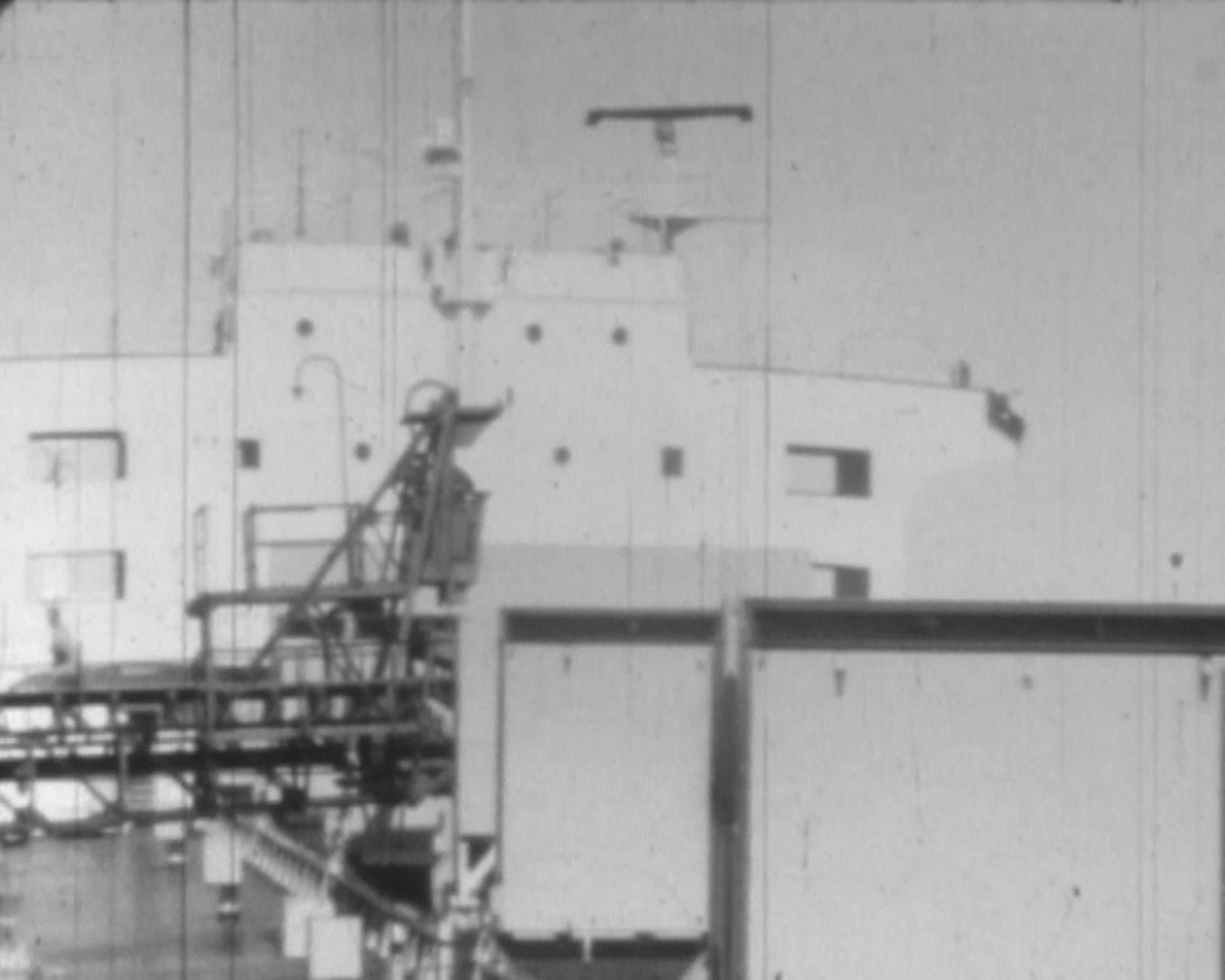


STEPHENS ADAMSON



STEPHENS ADAMSON

















PIERRE L-1

DUNKERQUE



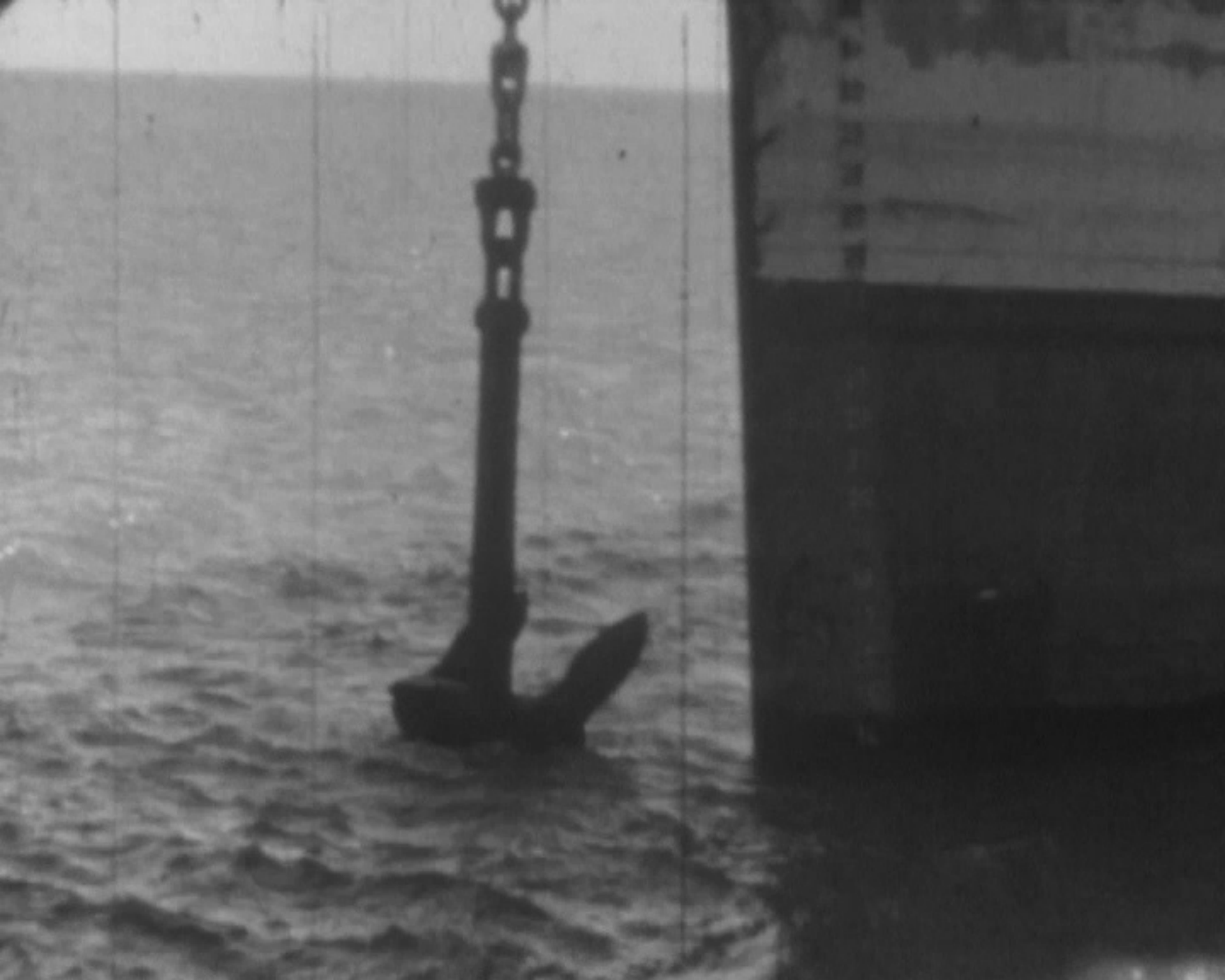


PIERRE L-D

PIERRE L-D



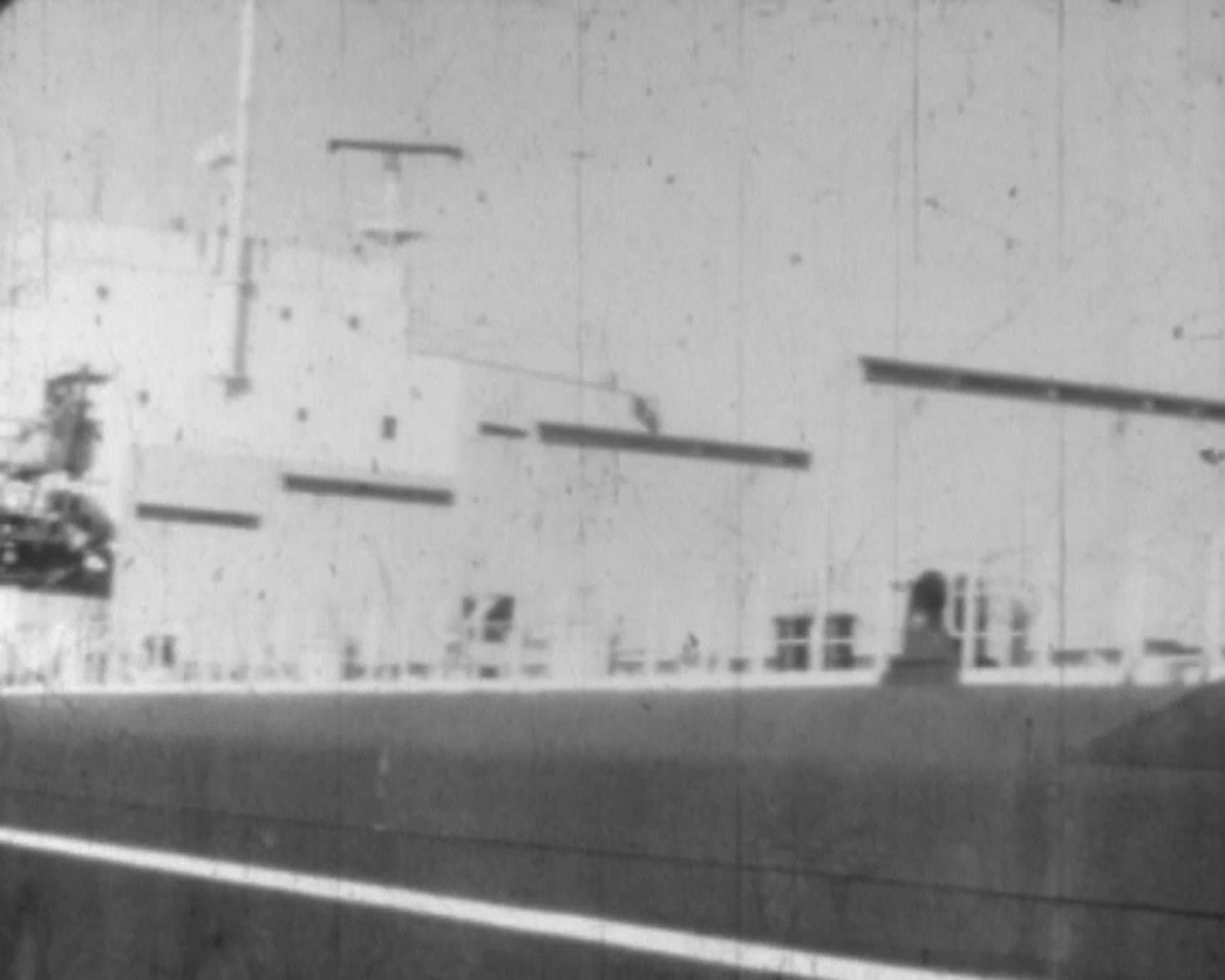










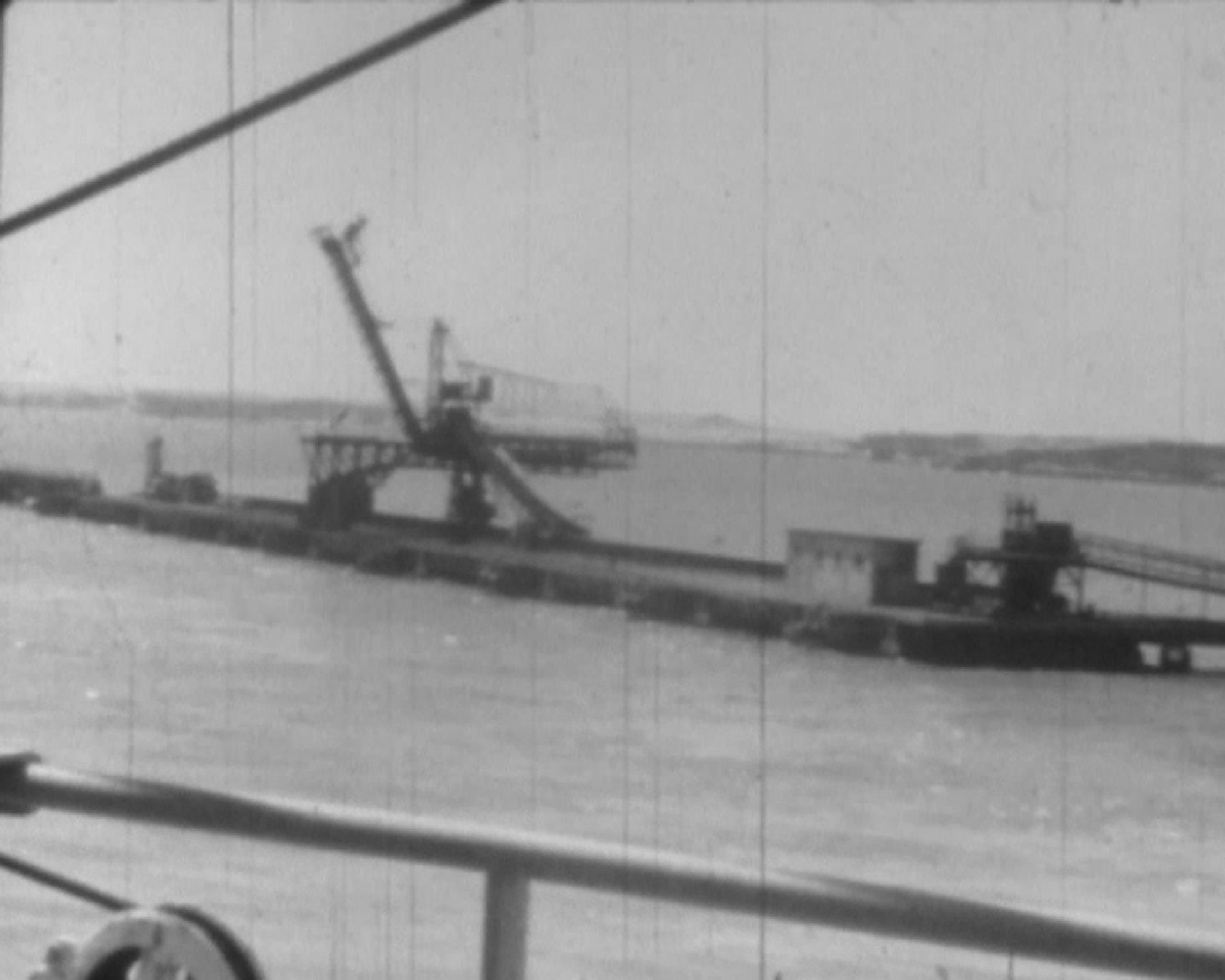






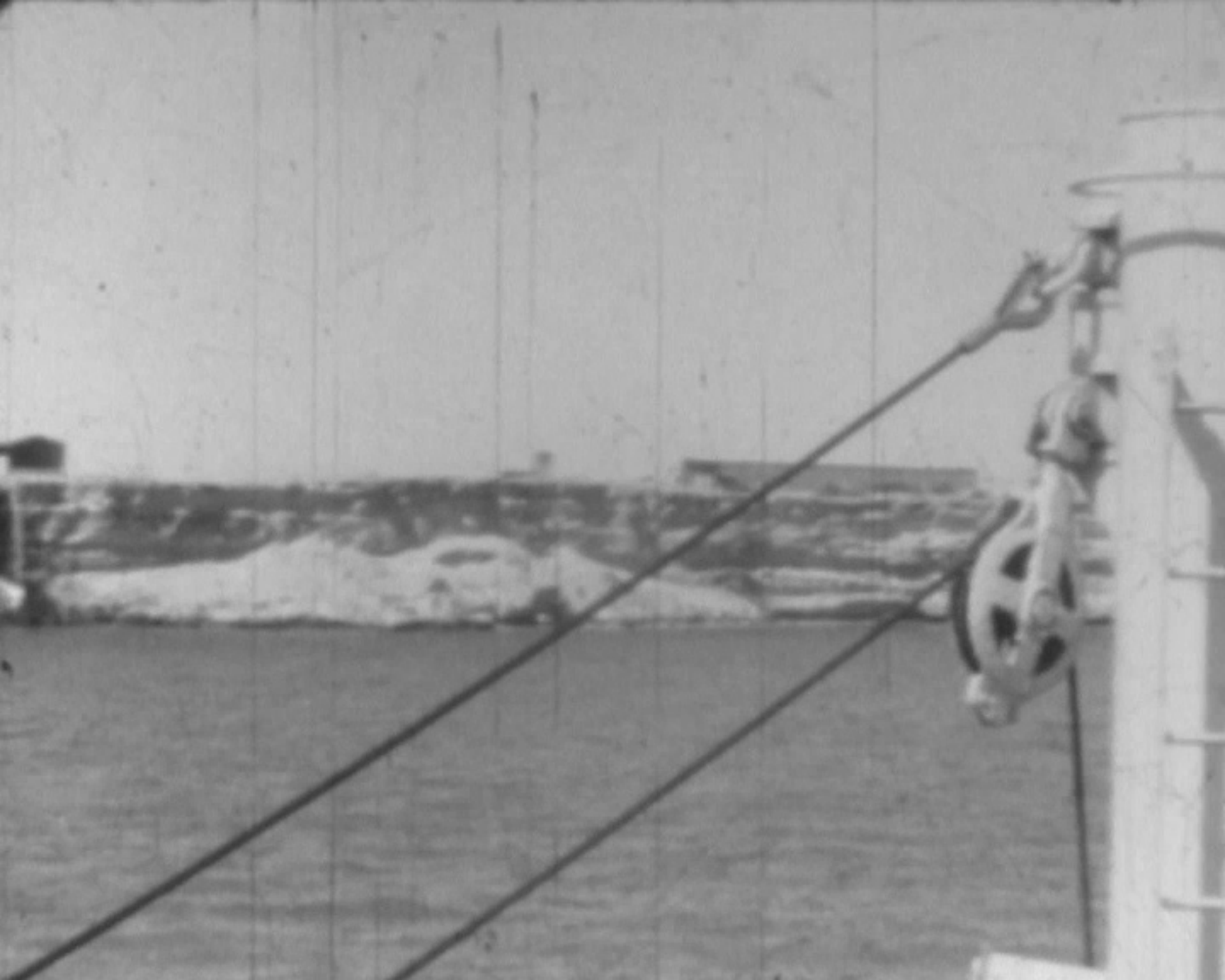






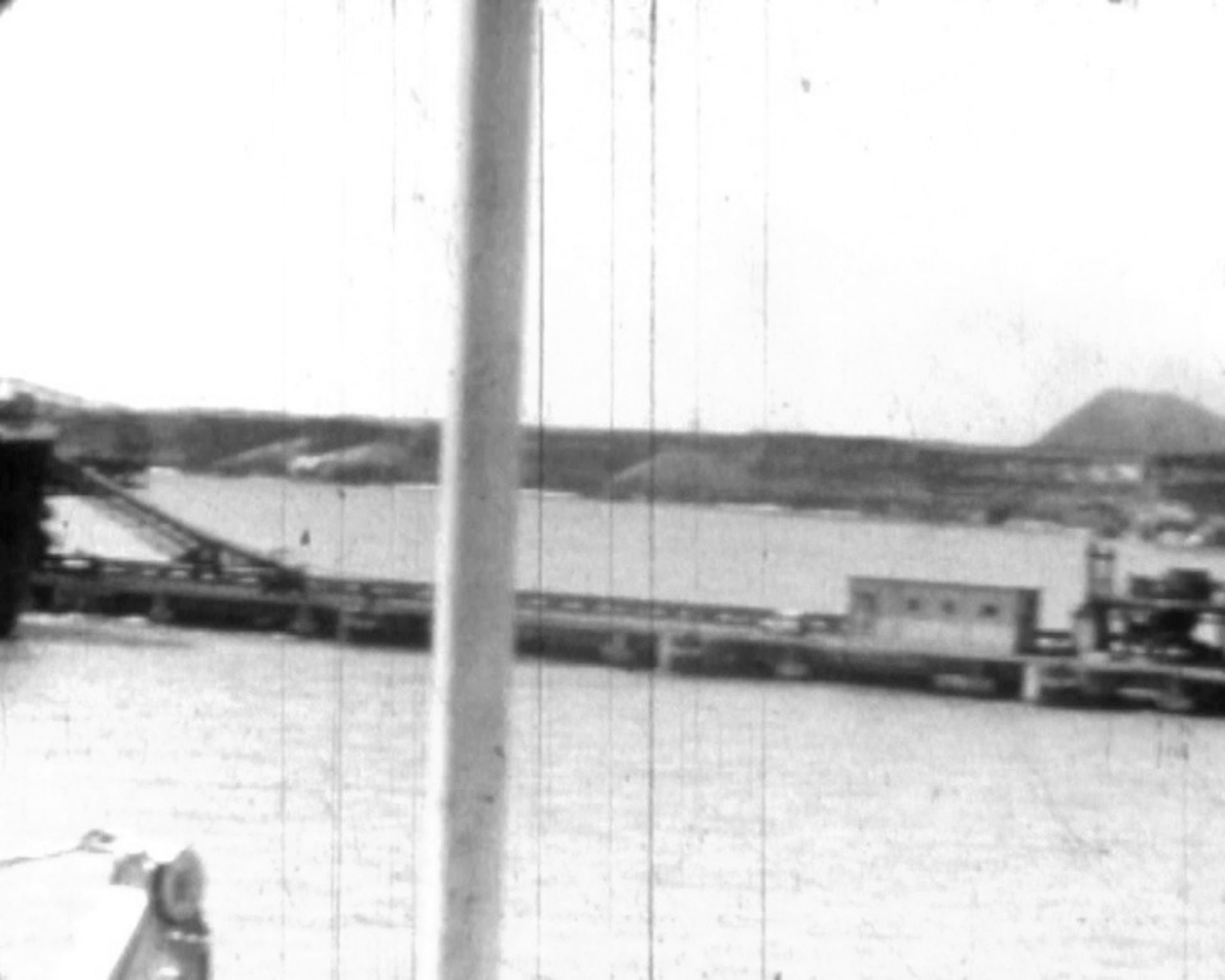




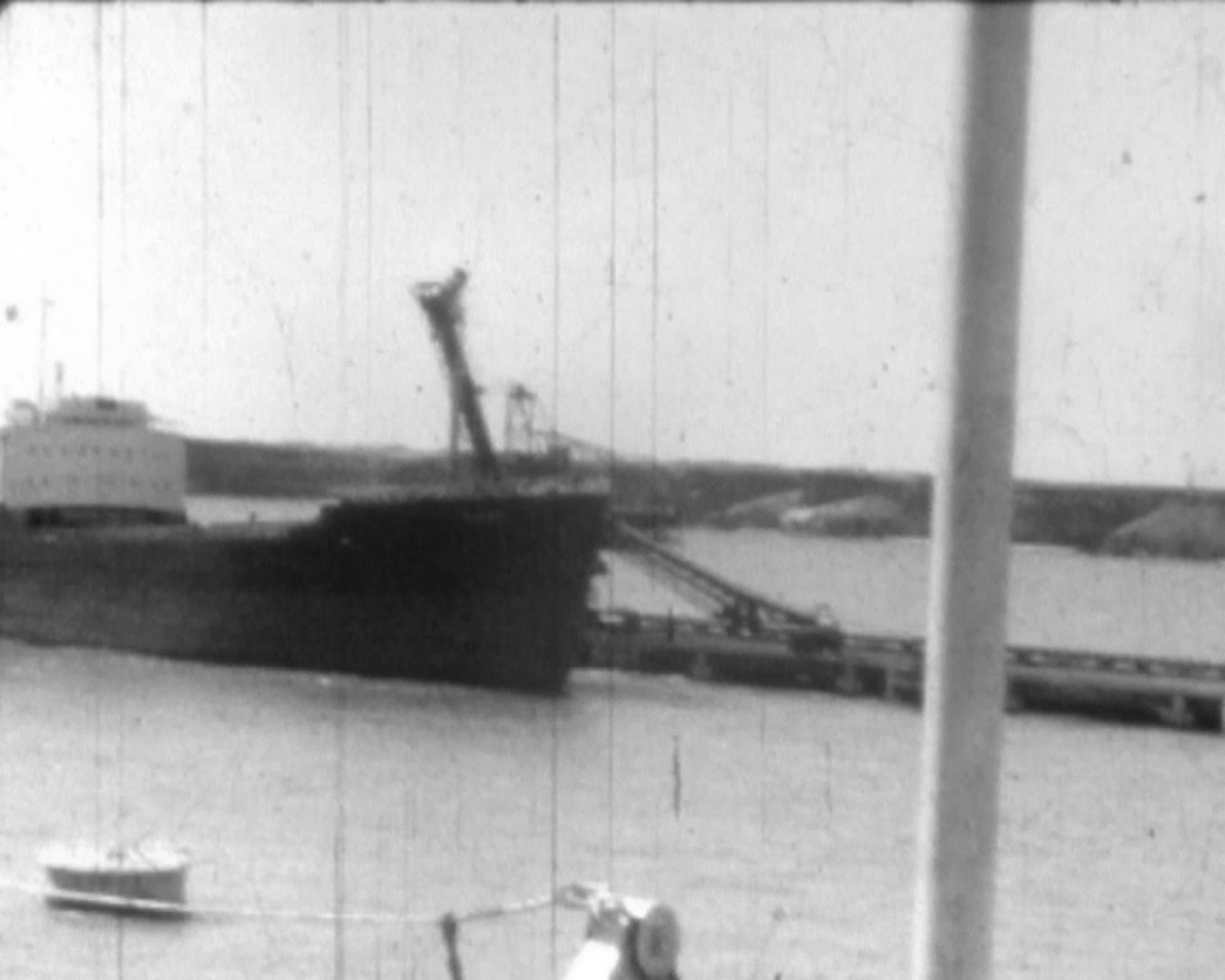










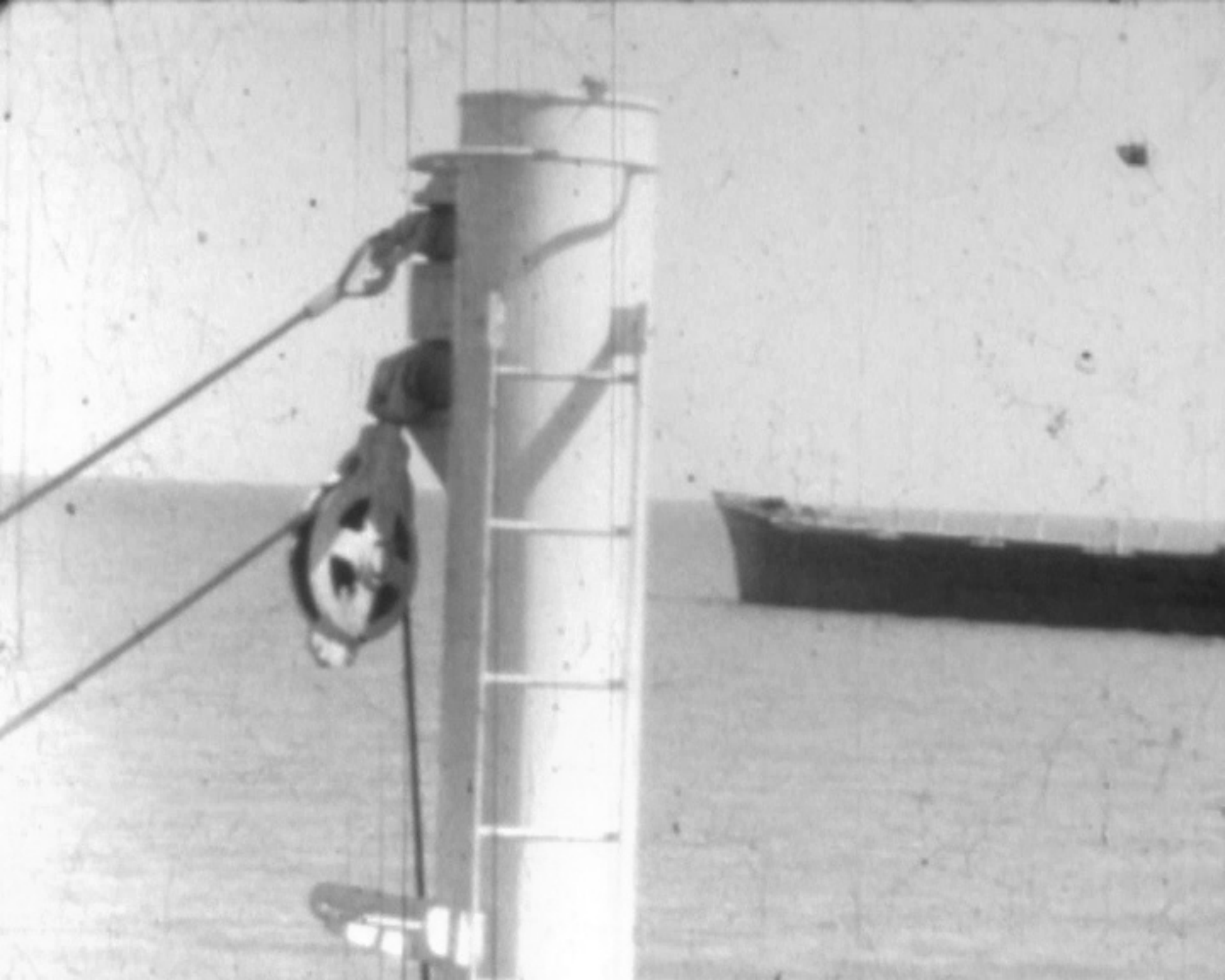


































































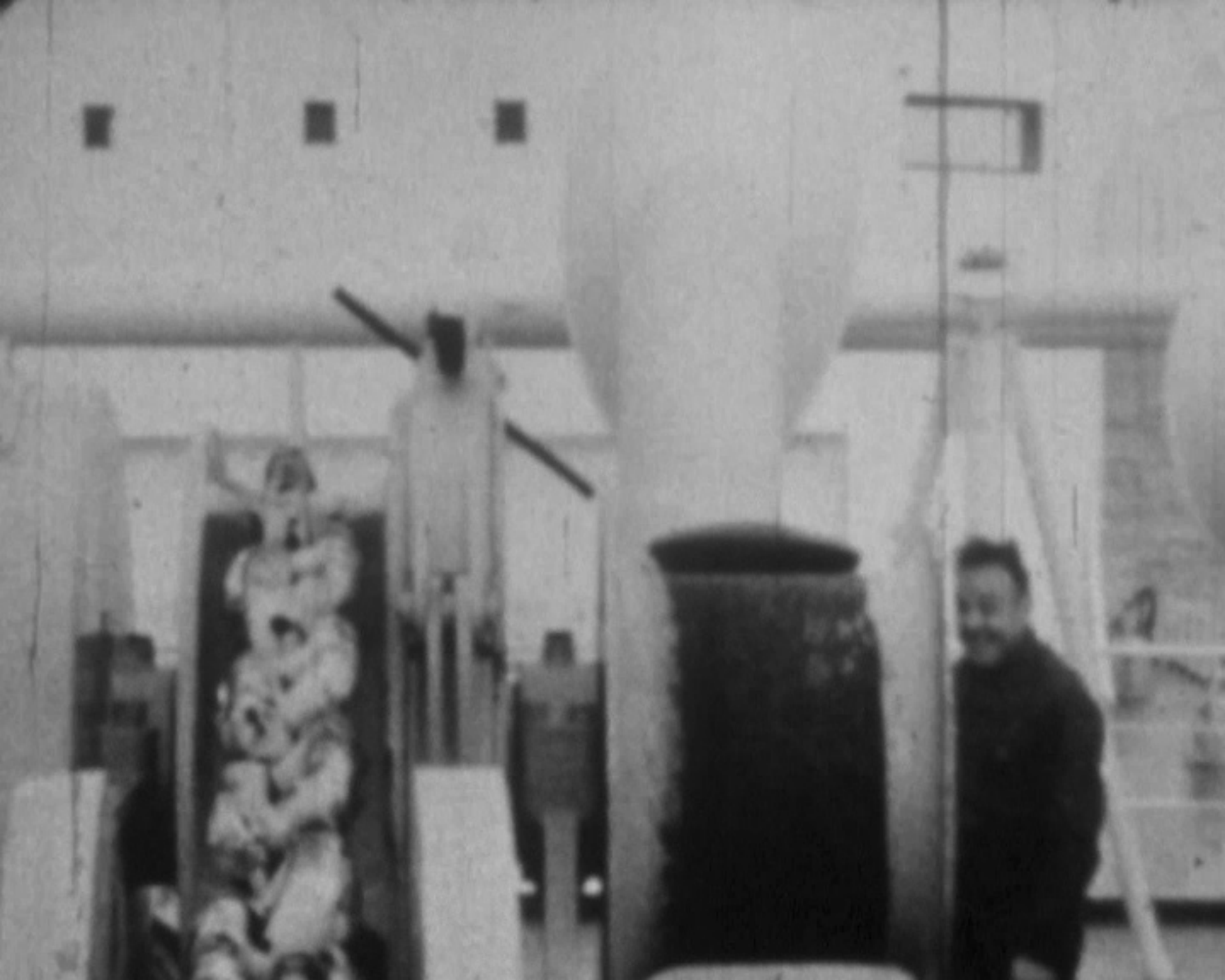




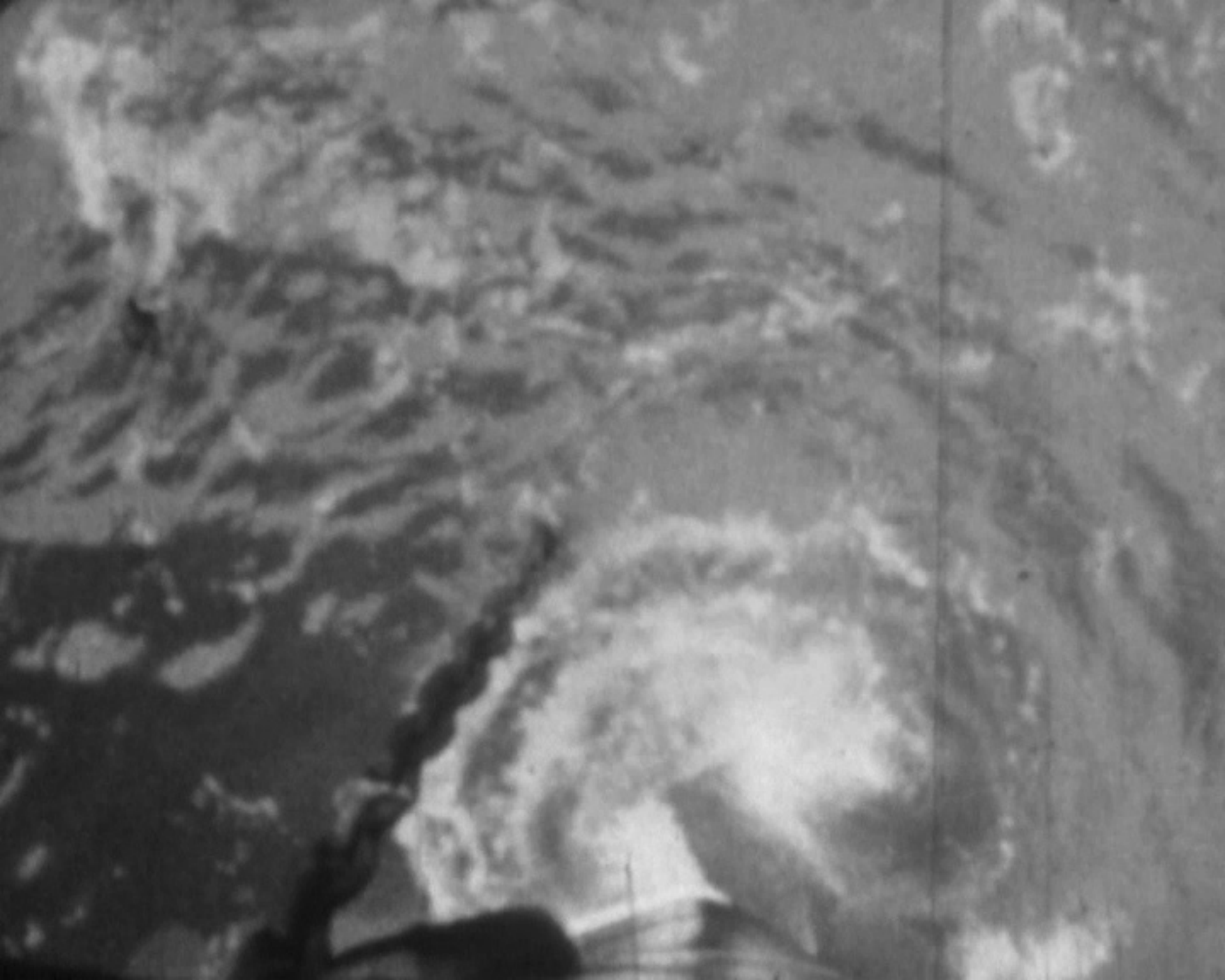


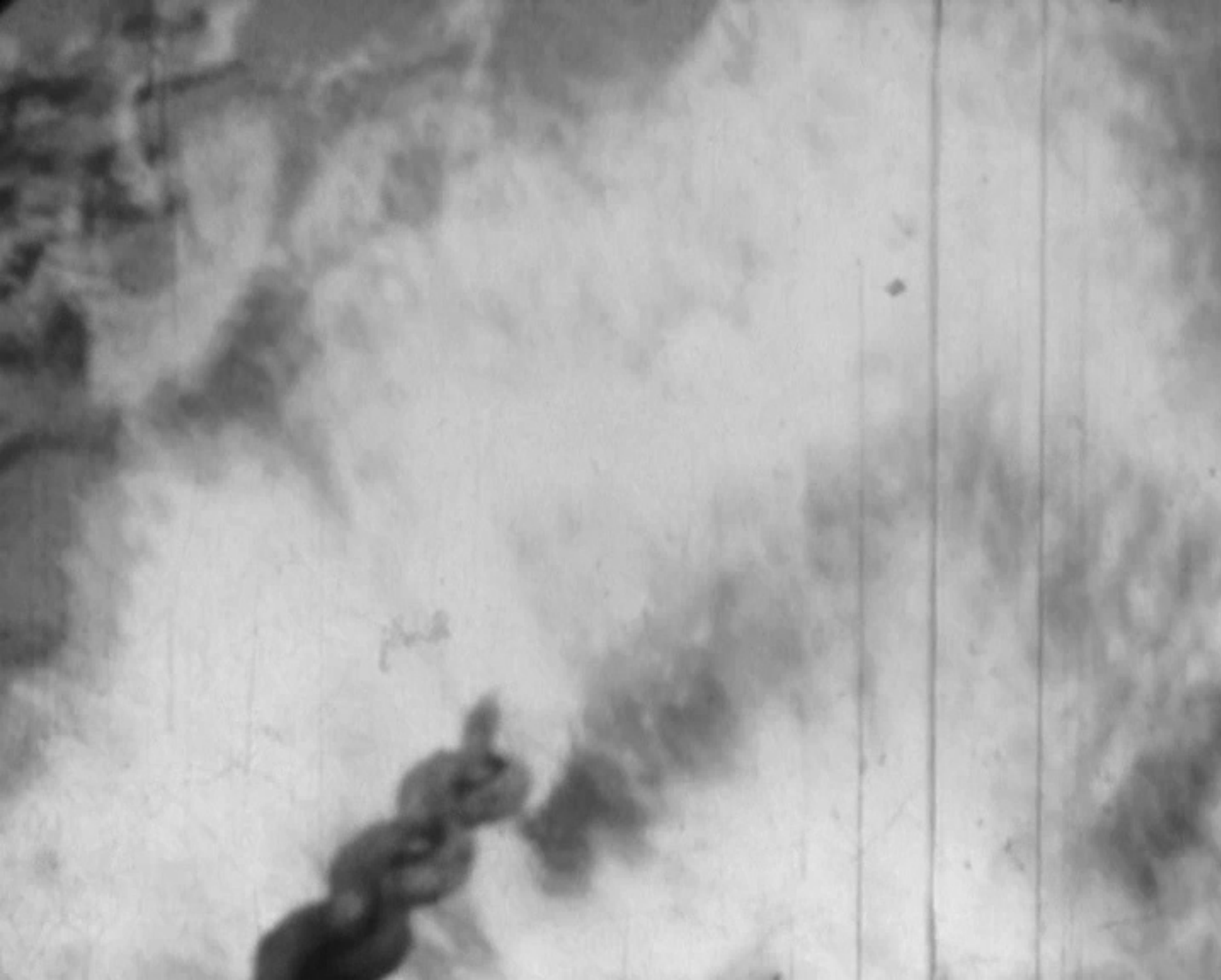












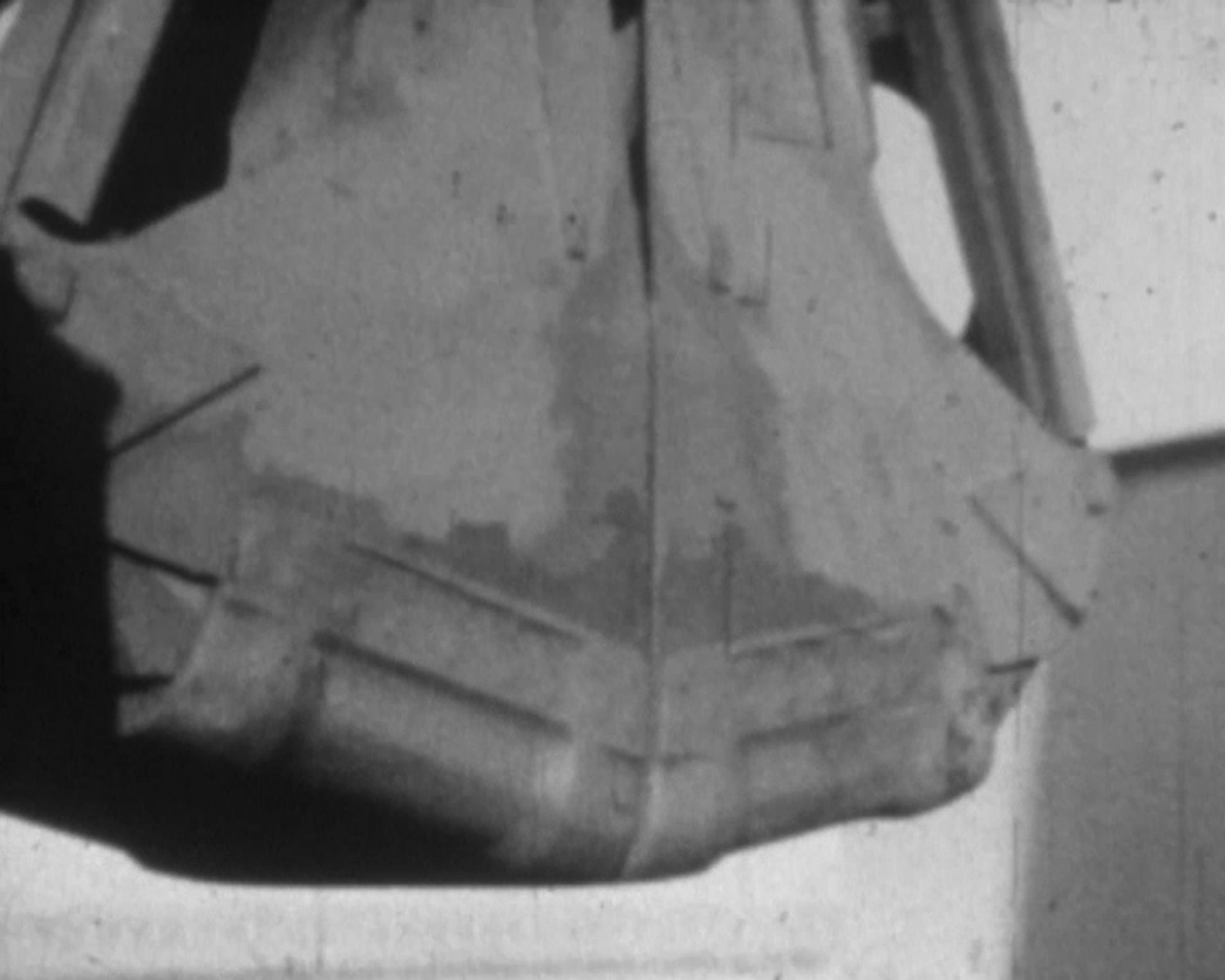
GERARD
DUNKERQUE

A black and white photograph showing a close-up of a boat's cabin. The cabin is white with a dark, pointed roof. A sign on the side of the cabin reads "GERARD" in large, bold, sans-serif letters, with "DUNKERQUE" written below it in smaller letters. The cabin is situated on a boat, and the background shows a body of water and a distant shoreline. A dark circular object, possibly a porthole or a light fixture, is visible on the upper part of the cabin's side. The overall image has a grainy, historical quality.

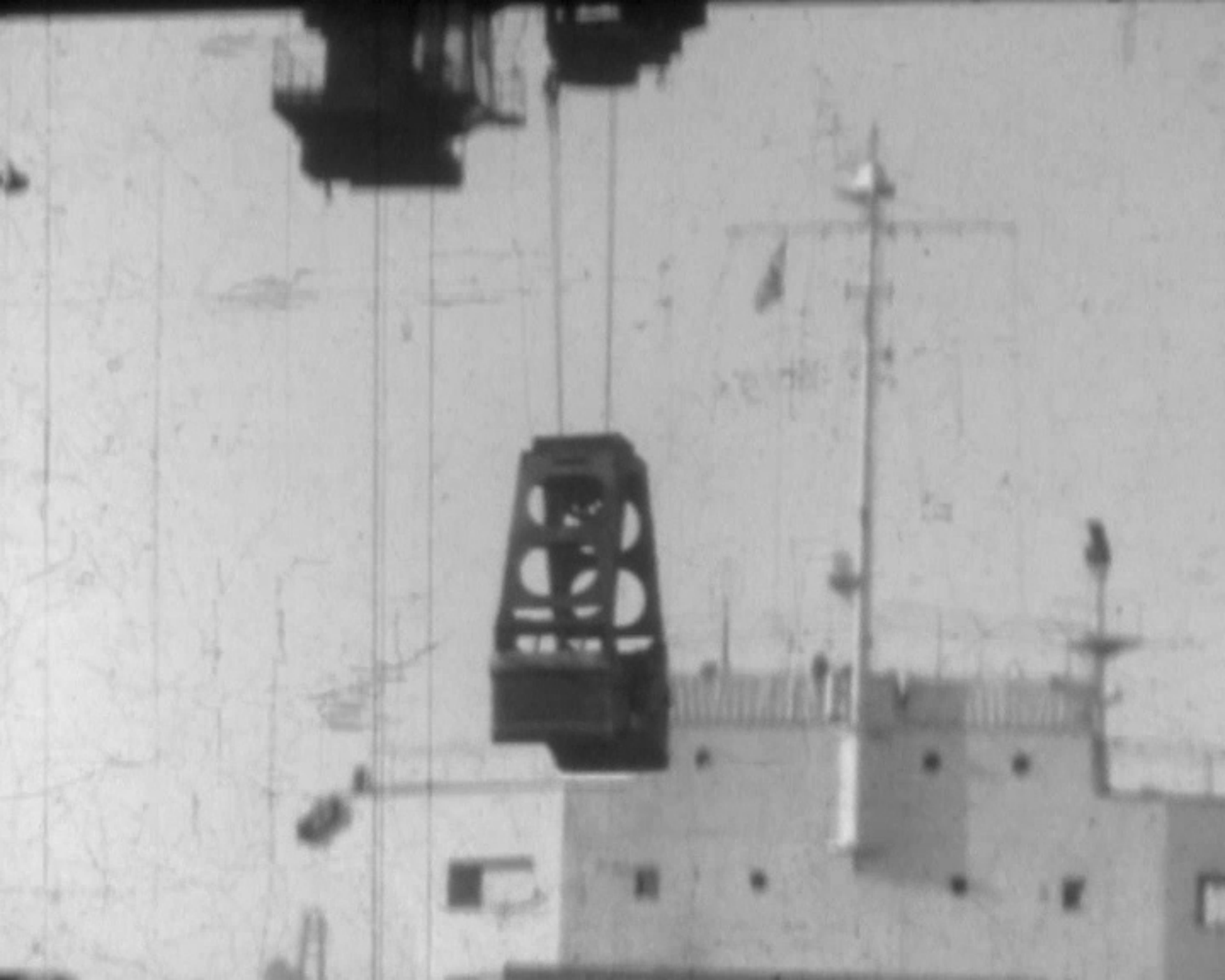
GERARD
DUNKERQUE





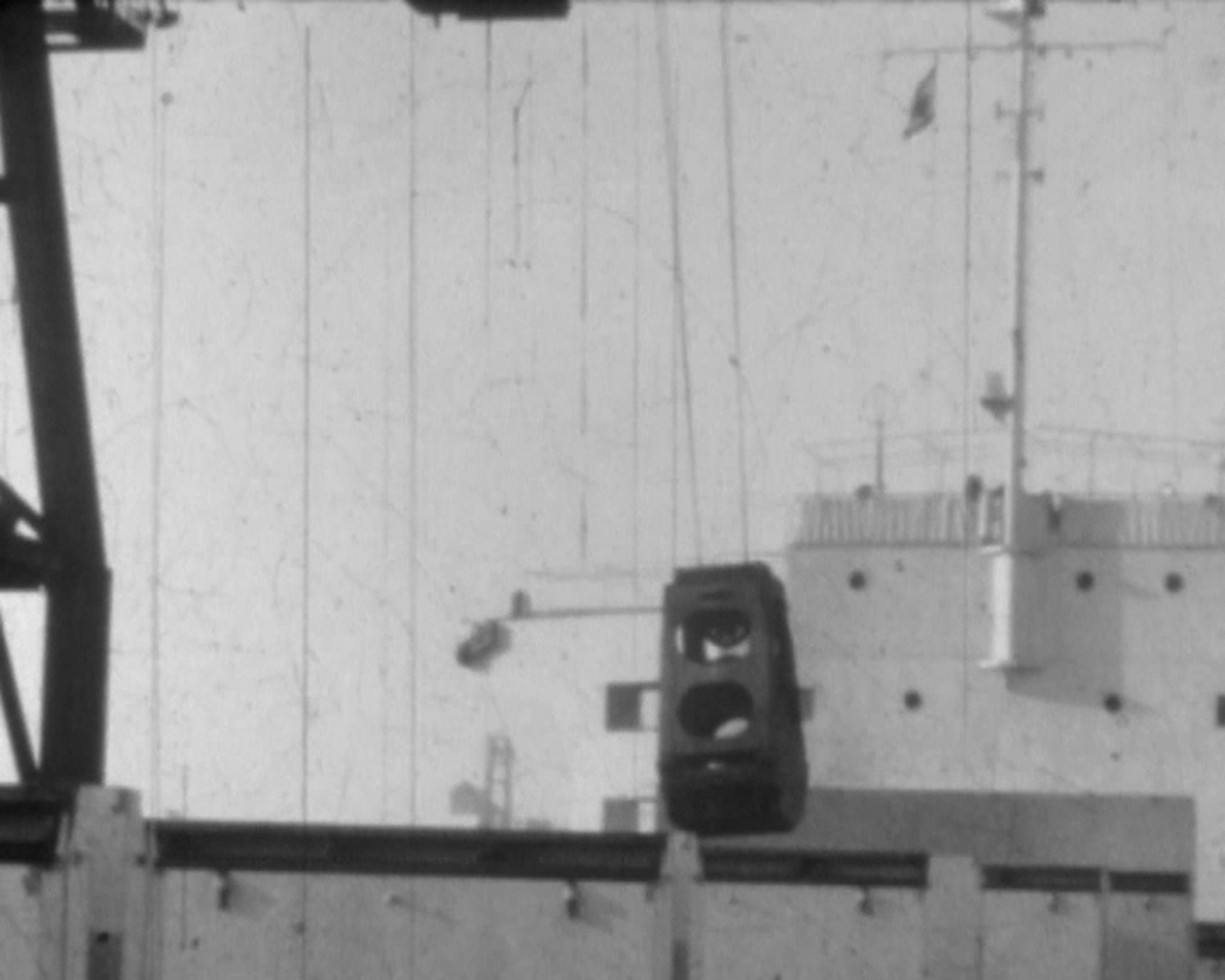






PORTIQUE 1

CHAMBRE DE COMMERCE
ET D'INDUSTRIE DE
DUNKERQUE

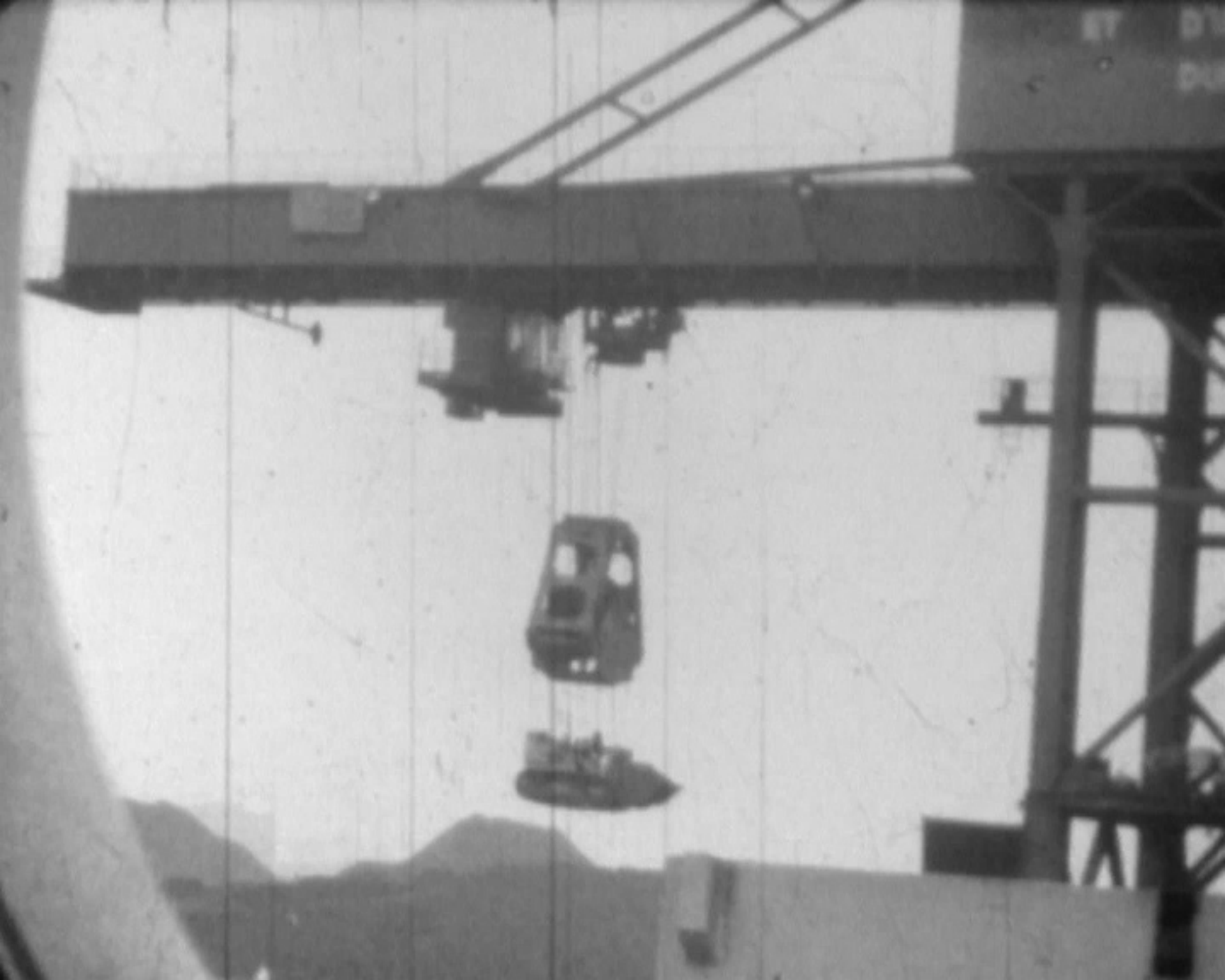












photogrammes extraits du film
Pierre L.D. Dunkerque 1963
11 min 31 s

fonds François Renault

*LE TRAIT
SOUS LA VAGUE*

Pierre-Yves Racine
Florian Stéphant

letraitsouslavague.fr

version 01 du 15-12-2020